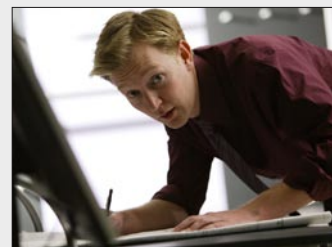
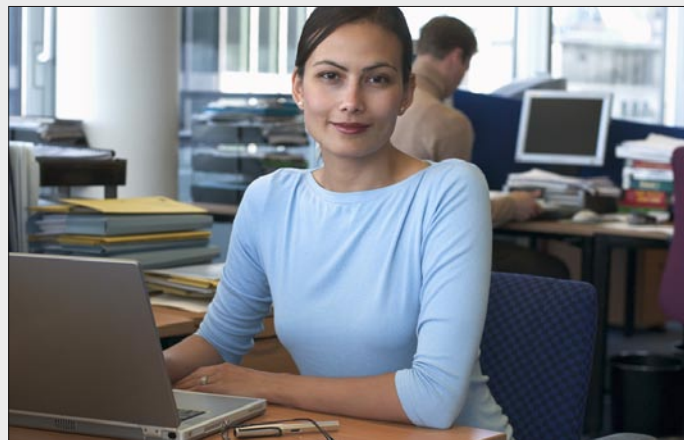


Serving the Automotive Industry with Passion and Excellence

Proactive - That is what we strive to be. In the typical business world many companies tend to be more reactive than proactive. We believe that in today's competitive business world that is not enough. At Si-Gate recognizing future customer and market needs before they arise and responding to them in an efficient and timely manner puts us and our customers in a unique position. Our goal is to consistently serve our customers in a friendly, ethical, and fair manner and to be able to provide timely and innovative solutions to help fulfill their needs.



Our Products and Services

With a background Stretching from aerospace to automotive electronics, Si-Gate GmbH is well equipped to meet your electronic needs. Whether it is prototype development or production engineering, Si-Gate has the experience, knowledge, and competence to assist you in your most in depth projects.

FPGA Development Boards -

With innovative products such as our X-1500 FPGA Development Platform we demonstrate the necessary experience for doing pre-silicon development as well as Custom ECU Design. This allows customers an efficient way to prove system architecture before going to volume production.

VHDL Programming -

For integrating third party IP blocks, Si-Gate has the tools and competence to develop optimal VHDL code for your exact needs. We have extensive experience in developing automotive control systems. Being an X-PERT XILINX Partner, we can offer a complete integration of peripherals into your third party FPGA applications.

Powertrain Controllers -

With projects ranging from motor-sports to production programs, Si-Gate can assist you in your powertrain development projects . Whether it be real-time engine control, to variable valve timing control needs, we have the experience it takes to optimize these technologies in today's automotive environment. This includes forward and rear-wheel transmission electronics as well as solenoid & electric motor driven shift systems.

Powertrain Controllers -

Schematic Entry - We use the industries latest CAD tools to help implement your most innovative designs. We can provide custom net list generation for your CAD databases in all major formats.

PCB Design & Assembly - Si-Gate offers complete PCB design and assembly services for insuring a quick turn around that your development projects require.



■ **X-1500 Configurable Automotive ECU Platforms**

The X-1500 supports physical layers for 10/100 Ethernet, JTAG, USB 2.0, 12-bit ADC, High and Low Speed CAN, FlexRay™, LIN, K-Line, UART, and SPI along with on-board Flash and SRAM memory. The X-1500 provides designers with a configurable ECU right out of the box suitable for a wide range of Automotive and Industrial applications. The X-1500 is ideal for projects where flexibility and expandability is needed for your future ECU developments.



■ **VDL-1000 Vehicle Data Loggers**

Currently the X-1500 supports physical layers for 10/100 Ethernet, JTAG, USB 2.0, 12-bit ADC, High and Low Speed CAN, FlexRay™, LIN, K-Line, UART, and SPI along with on-board Flash and SRAM memory. The X-1500 provides designers with a configurable ECU right out of the box suitable for a wide range of Automotive and Industrial applications. The X-1500 is ideal for projects where flexibility and expandability is needed for your future ECU developments.



■ **FMS-500 Fleet Management System**

The FMS-500 is an AVL system which is able to gather important vehicle data by communicating with different vehicle bus protocols such as CAN. It then transmits this data together with NMEA signals from its built in GPS receiver. The transmission is an overlapped system using multiple communication protocols via DTE compatible V.24, GPRS, or WLAN. This provides an added security when it is critical that there is not an interruption in the flow of data.

Contact Information